

Grade 9 Curriculum

Core Subjects

<i>English</i>	English 9
<i>Mathematics</i>	Math Methods, or Math Studies, or Integrated Math 9
<i>Science</i>	Biology and Environmental Science
<i>Social Science</i>	History (semester), and Physical Geography (semester)

Language Options

<i>Chinese</i>	(students choose one Language)
<i>French</i>	
<i>Spanish</i>	
<i>Filipino</i>	(native speakers only)
<i>Korean</i>	

Visual and Performing Arts

Art (semester) and Music (semester), or Band (one year), or Choir (one year), or Strings (one year), or Dance (one year)

Computer and Religious Studies

Computer Studies (one semester) and Religious Studies (one semester)

Health and Physical Education (one year course)

Grade 10 Curriculum

Core Subjects

<i>English</i>	Honors Literature, Literature or Language
<i>Mathematics</i>	Math Methods or Math Studies or Integrated Math 10
<i>Science</i>	Chemistry / Physics (semester each) or Advanced Chemistry / Physics (semester each)
<i>Social Science</i>	History (semester), and Human Geography (semester)

Language Options

<i>Chinese</i>	(students choose one Language)
<i>French</i>	
<i>Spanish</i>	
<i>Filipino</i>	(native speakers only)
<i>Korean</i>	

Visual and Performing Arts

Art (semester) and Music (semester), or Foundations of Art (one year), or Band (one year), or Choir (one year), or Strings (one year), or Dance (one year)

Computer and Religious Studies

Computer Studies or Computer Programming (one semester) and Religious Studies (one semester)

Health and Physical Education (one year course)

Grade 11 and 12 Curriculum

All students in Grades 11 and 12 take at least six classes, one course from each of the groups listed below. In addition, they take Junior Seminar in the first semester of Grade 11 and Theory of Knowledge (TOK) in the second semester of Grade 11 and first semester of Grade 12. They also are to participate in after school activities/clubs and community service outreach at least once a semester. Successful completion of these courses and requirements over the last two years of study qualifies a student for one of two different Brent School diplomas.

Brent Diploma

- ❖ Minimum of six subjects
- ❖ Community Service / Activity hours
- ❖ Junior Seminar
- ❖ Theory of Knowledge

Brent Honors Diploma

- ❖ Three subjects at the Higher Level
- ❖ Three subjects at the Standard Level
- ❖ Community Service / Activity hours
- ❖ Junior Seminar
- ❖ Theory of Knowledge
- ❖ Maintain a 3.00 Grade Point Average

International Baccalaureate Diploma

- ❖ Same as Brent Honors Diploma
- ❖ Extended Essay research paper
- ❖ CAS – 8 learning outcomes
- ❖ External examinations (IB Diploma Candidates are exempt from regular Grade 12 final examinations).

Students take at least one course from each of the following groups:

LANGUAGE A1

English (HL and SL)
Filipino (HL and SL)
Korean (HL)
Japanese (SL)
Others (with external tutor)
English 11 (non-IB)
English 12 (non-IB)

SOCIAL SCIENCE

Business and Management (HL and SL)
Economics (HL and SL)
Geography (HL and SL)
History (HL and SL)
Psychology (HL and SL)
Information Technology in a Global Society (HL and SL)
Economics/Business 11 (Non-IB)
Economics/Business 12 (Non-IB)

MATHEMATICS

Mathematics HL
Mathematics SL
Math Studies SL
Integrated Math 11 (non-IB)
Integrated Math 12 (non-IB)

ELECTIVES

Computer Science (HL and SL)
Music (IB and non-IB)
Theater Arts (HL and SL)
Visual Arts (HL and SL)
Band (non-IB)
Choir (non-IB)
Strings (non-IB)
Visual Arts 11 (non-IB)
Visual Arts 12 (non-IB)
Dance (non-IB)
Another core course

LANGUAGE A2/B

English (HL and SL)
Chinese (HL and SL)
Filipino (HL and SL)
French (HL and SL)
French Ab Initio (SL)
Spanish (HL and SL)
Spanish Ab Initio (SL)

SCIENCE

Biology (HL and SL)
Chemistry (HL and SL)
Physics (HL and SL)
Science and Technology 11 (non-IB)
Science and Technology 12 (non-IB)



School Administration

Mr. Dick B. Robbins
Headmaster

Mr. Jeffrey W. Hammett
Deputy Headmaster
jhammett@brent.edu.ph

Mr. Jason Atkins
Upper School Principal
jatkins@brent.edu.ph

Mr. Joseph Levno
Assistant Upper School Principal
jlevno@brent.edu.ph

Mrs. Heather Atkins
Director for Admissions
hatkins@brent.edu.ph

Ms. Maria Cristina R. Pozon
IB Coordinator
kpozon@brent.edu.ph

Mr. Benjamin Compton
College Placement and Guidance Counselor
bcompton@brent.edu.ph

Mrs. Carrie Levno
College Placement and Guidance Counselor
clevno@brent.edu.ph

Fr. Benjamin A. Jance III
Registrar/Chaplain
bjance@brent.edu.ph

Mr. Charles M. Bates
Director for Student Activities
cbates@brent.edu.ph

Mr. Ian Sutherland
Director for Academic Affairs and Curriculum/
isutherland@brent.edu.ph

Brent International School Manila Upper School Profile

Address: Brentville Subdivision, Barangay Mamlasan, Biñan, Laguna 4024 Philippines
Telephone: (6349) 5114330 to 39 (632) 60010300 to 309
Facsimile : (63-49) 5114356

E-Mail: bism@brent.edu.ph OR Upperschool@brent.edu.ph

College Board Code: 705450 **IB School Code:** 000432

Accredited by: Western Association of Schools and Colleges (WASC)

Recognized by: International Baccalaureate Organization (IBO)

School Community

(2010-2011 School Year)

Nursery/Lower School	377
Middle School	250
Upper School	416
Total Enrollment	1,043

Senior Class Size 113

Teaching Faculty 114

Brent is an international, co-educational, day school associated with the Episcopal Church in the Philippines. The Mission Statement of all BRENT SCHOOLS is, as follows:

“Brent schools, in a Christian ecumenical environment in the Philippines, are committed to develop individual students as responsible global citizens and leaders in their respective communities, with a multi-cultural and international perspective, and equipped for entry to colleges and universities throughout the world.”

The Brent family consists of students from over 42 different countries. With a Christian ethos, the school seeks to help students to become rational, intellectually curious and tolerant learners receptive to new ideas. While developing the talents and interests of students, the school seeks to instill a strong sense of values.

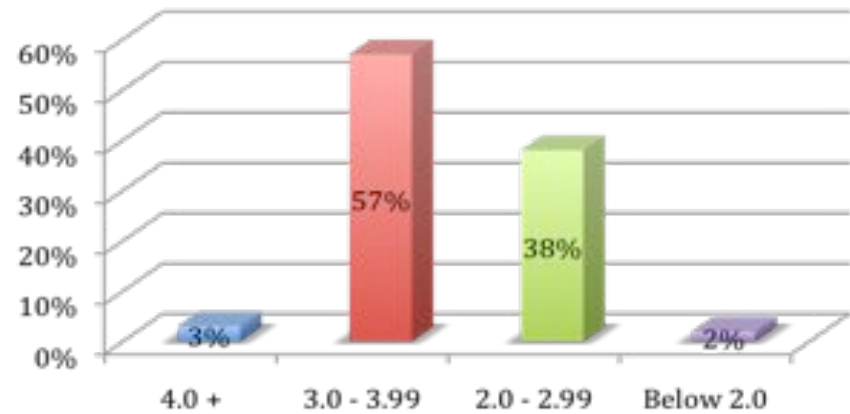
Brent provides a well-rounded education. Academic pursuits are complemented by extra-curricular activities, such as sport competitions and social and humanitarian projects. The Brent Upper School curriculum prepares students for success in the International Baccalaureate program, which is the program available for all students in Grades 11 and 12.

Grade Point Average and Ranking

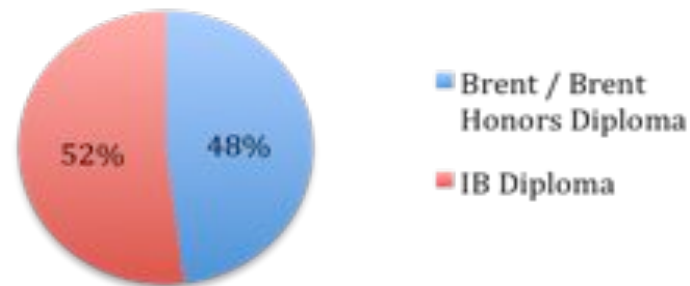
Due to the mobility rate of international students, as well as our relatively small class sizes, Brent does not provide the specific rank of our students. The cumulative GPA of our students reflects courses taken at Brent only and is reported on a weighted 4.00 scale. Grades earned at other schools are attached to the transcript but may not be included in the GPA calculation. IB Higher Level courses are marked (HL) on transcripts and receive an additional weighting of .50

A+ = 4.0	B+ = 3.3	C+ = 2.3
A = 4.0	B = 3.0	C = 2.0
A- = 3.7	B- = 2.7	C- = 1.7
D+ = 1.3	F = 59 and below	WD = Withdrawn
D = 1.0	INC = Incomplete	NC = No credit
D- = 0.7	ND = No data	ID = Insufficient Data

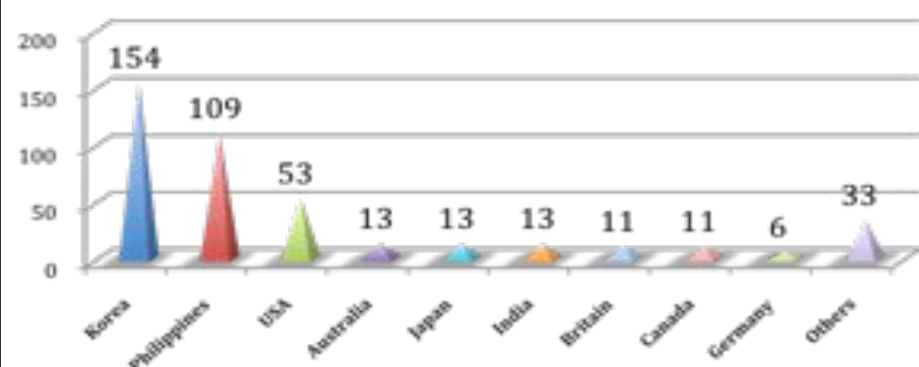
Class of 2010 GPA Distributions



Percentage of Students Receiving Brent / Brent Honors Diploma versus IB Diploma



27 Nationalities Represented In Our Student Body



Graduation Requirements

Subject	Credit
English	4
Mathematics	4
Social Science	4
Science	4
Foreign Language	3
Electives	2
Health and Physical Education	1
Theory of Knowledge	1

To complete the High School Program, students are also required to take Religious and Computer Studies, Art, Music, Health, Physical Education and participate in Community Service.

SAT Mean Scores Summary

	SAT I		
	Critical Reading	Math	Writing
Class of 2010	540	620	550
Class of 2009	508	596	518
Class of 2008	521	554	511
	SAT II		
	Math Level 2	Science	Foreign Language
Class of 2010	690	650	650
Math Level 2	580	Biology (MB)	650
Literature	650	Biology (EB)	620
Chinese	650	Physics	610
French	530	Chemistry	680
Spanish	750	US History	600

Class of 2009	Math Level 1	609	Biology	561
	Math Level 2	670	Chemistry	634
	Literature	612	Physics	687
	French	540	Chinese	660
	Korean	760		
Class of 2008	Math Level 1	559	Biology	587
	Math Level 2	614	Chemistry	608
	Literature	583	Physics	572
	French	505	US History	520
	Korean	795	World History	543

IBO'S MISSION STATEMENT

"The International Baccalaureate Organization aims to develop inquiring, knowledgeable and caring young people who help to create a better and more peaceful world through intercultural understanding and respect.

To this end the IBO works with schools, governments and international organizations to develop challenging programmes of international education and rigorous assessment.

These programmes encourage students across the world to become active, compassionate and lifelong learners who understand that other people, with their differences, can also be right."

Some of the colleges and universities into which our students have been accepted in the last five years.

U.S.A

Albright College
 American University in Dubai
 American University of Paris
 Babson College
 Bard College
 Baylor University
 Bentley University
 Boston College
 Boston University
 Brandeis University
 Brigham Young University-Hawaii
 Bryn Mawr College
 Carnegie Mellon University
 Chapman University
 Clark University
 Colby College
 Cornell University
 Dalhousie University
 Davidson College
 DePaul University
 DeSales University
 Duke University
 Elmhurst College
 Eugene Lang College for Liberal Arts
 Fordham University
 Georgia Institute of Technology
 Gonzaga University
 Gustavus Adolphus College
 Haverford College
 Hofstra University
 Illinois Institute of Technology
 Indiana University at Bloomington
 Ithaca College
 James Madison University
 Johns Hopkins University
 Knox College
 La Salle University
 Linfield College
 Loyola Marymount University
 Loyola University Chicago
 Macalester College
 Michigan State University
 Muhlenberg College
 New York University
 North Carolina State University
 Northeastern University
 Northwestern University
 Oberlin College
 Occidental College
 Ohio Wesleyan University
 Otis College of Art and Design
 Parsons School of Design
 Pennsylvania State University
 Pepperdine University
 Pratt Institute
 Reed College
 Rensselaer Polytechnic Institute
 Rhode Island School of Design
 Rice University
 Rosemont College
 Saint Mary's College of California
 Santa Clara University
 Sarah Lawrence College
 Savannah College of Art and Design
 School of the Art Institute of Chicago
 Seattle University
 Seton Hall University
 Skidmore College
 Smith College
 Stonehill College
 Suffolk University
 Syracuse University
 Texas A&M University
 Texas Christian University
 The George Washington University
 The Ohio State University
 The University of Arizona
 The University of Iowa
 University of North Carolina, Chapel Hill
 The University of Texas, Austin
 The University of Texas, El Paso
 The University of Texas, San Antonio
 University of California at Berkeley
 University of California at Irvine
 University of California at Los Angeles
 University of California at San Diego
 University of California at Santa Cruz
 University of Colorado at Boulder
 University of Denver
 University of Illinois at Urbana-Champaign

IB Results Summary (For the last five years)

Class Year	Class Totals	Diploma Candidates	Diploma Awarded	Brent Pass Rate	IB Pass Rate	Mean Scores	High Scores	Low
2010	109	57	55	97%	78%	32	41	25
2009	114	71	57	80%	78%	31	41	24
2008	106	42	37	88%	79%	30	37	25
2007	94	42	39	93%	79%	32	39	24
2006	100	47	45	96%	80%	32	39	24

IB Grading System			
7-Excellent	6-Very Good	5-Good	
4-Satisfactory	3-Mediocre	2-Poor	1- Very Poor

May 2010 Session

Subject Group	7	6	5	4	3	2	1	P	Brent	World
Subject Group 1	7	6	5	4	3	2	1	P	Brent	World
ENGLISH A1 HL	0	2	18	19	1	0	0	0	4.53	4.71
ENGLISH A1 SL	0	1	7	7	1	0	0	0	4.50	4.96
KOREAN A1 HL	8	17	3	0	0	0	0	0	6.18	6.33
KOREAN A1 SL	2	1	0	0	0	0	0	0	6.67	6.43
Subject Group 2	7	6	5	4	3	2	1	P	Brent	World
ENGLISH A2 HL	0	3	14	0	0	0	0	0	5.18	5.25
ENGLISH A2 SL	0	0	1	1	0	0	0	0	4.50	5.47
ENGLISH B HL	0	3	2	1	0	0	0	0	5.33	5.62
FRENCH AB. SL	0	2	0	0	0	0	0	0	6.00	4.87
FRENCH B HL	0	2	0	0	0	0	0	0	6.00	4.94
FRENCH B SL	0	0	0	5	1	0	0	0	3.83	4.69
MANDARIN B SL	0	2	4	2	0	0	0	0	5.00	5.93
PILIPINO A2 HL	0	1	0	1	0	0	0	0	5.00	5.38
PILIPINO A2 SL	1	0	0	0	0	0	0	0	7.00	6.00
SPANISH AB. SL	1	5	8	5	0	0	0	0	5.11	4.91
SPANISH B HL	1	0	0	0	0	0	0	0	7.00	5.60
SPANISH B SL	5	6	8	2	0	0	0	0	5.67	4.80
Subject Group 3	7	6	5	4	3	2	1	P	Brent	World
BUS.& MAN. HL ENGLISH	0	0	3	2	0	0	0	0	4.60	4.62
BUS.& MAN. SL ENGLISH	0	1	2	1	0	0	0	0	5.00	4.64
ECONOMICS HL ENGLISH	0	6	15	13	4	0	0	1	4.61	5.06
ECONOMICS SL ENGLISH	0	3	1	0	0	0	0	0	5.75	5.03
GEOGRAPHY HL ENGLISH	0	2	3	1	1	0	0	0	4.86	5.12
HIST.EUROPE/ME HL ENGLISH	0	1	7	12	3	0	0	0	4.26	0.00
HISTORY SL ENGLISH	0	1	1	0	0	0	0	0	5.50	0.00
ITGS HL ENGLISH	0	0	0	3	2	1	0	0	3.33	4.10
ITGS SL ENGLISH	0	0	0	2	0	1	0	0	3.33	4.15
PSYCHOLOGY HL ENGLISH	0	2	1	5	1	0	0	0	4.44	4.69
PSYCHOLOGY SL ENGLISH	0	0	1	0	0	0	0	0	5.00	4.28
Subject Group 4	7	6	5	4	3	2	1	P	Brent	World
BIOLOGY HL ENGLISH	1	7	2	6	3	1	0	0	4.70	4.18
BIOLOGY SL ENGLISH	0	4	4	7	1	0	0	0	4.69	4.29
CHEMISTRY HL ENGLISH	0	2	4	1	2	0	0	0	4.67	4.36
CHEMISTRY SL ENGLISH	0	0	3	4	0	0	0	0	4.43	3.92
PHYSICS HL ENGLISH	0	0	3	3	1	0	0	0	4.29	4.50
PHYSICS SL ENGLISH	1	1	4	8	2	1	0	0	4.29	4.07
Subject Group 5	7	6	5	4	3	2	1	P	Brent	World
COMPUTER SC. HL ENGLISH	0	1	1	0	0	0	0	0	5.50	4.90
COMPUTER SC. SL ENGLISH	0	0	1	1	0	0	0	0	4.50	4.55
MATH.STUDIES SL ENGLISH	3	14	6	1	0	0	0	1	5.79	4.75
MATHEMATICS HL ENGLISH	0	2	3	2	1	0	0	0	4.75	4.37
MATHEMATICS SL ENGLISH	2	15	9	8	2	0	0	0	5.19	4.48
Subject Group 6	7	6	5	4	3	2	1	P	Brent	World
VISUAL ARTS OPTION A HL ENGLISH	1	4	1	2	0	0	0	0	5.50	4.92
VISUAL ARTS OPTION A SL ENGLISH	3	3	1	0	0	0	0	0	6.29	4.49

U.S.A con't.

University of Maryland, College Park
 University of Miami
 University of Michigan
 University of Minnesota, Twin Cities
 University of Notre Dame
 University of Oregon
 University of Pennsylvania
 University of San Diego
 University of San Francisco
 University of Southern California
 University of the Sciences in Philadelphia
 University of Virginia
 University of Washington
 Vassar College
 Villanova University
 Virginia Polytechnic Institute University
 Washington University in St. Louis
 Wheaton College
 Widener University

UK/EUROPE

Amsterdam University College
 Bournemouth University
 Cardiff University
 Central St. Martins Art College
 Glion Hotel School
 Kingston University
 London Metropolitan University
 Royal Holloway, U of London
 Schiller International University
 School Oriental African Studies
 Swansea University
 University College London
 University of Birmingham
 University of Canterbury
 University of East Anglia
 University of Edinburgh
 University of Exeter
 University of Kent
 University of Lausanne
 University of Leeds
 University of London
 University of Manchester
 University of Nottingham
 University of St. Andrew

CANADA

Brock University
 Carleton University
 Case Western Reserve University
 Douglas College
 Fairleigh Dickinson University
 Fraser International College
 McGill University
 McMaster University
 Mount Allison University
 Queen's University
 Trent University
 University of British Columbia
 University of Toronto
 University of Waterloo
 University of Western Ontario
 University of York
 Wilfrid Laurier University
 York University

AUSTRALIA / ASIA-PACIFIC

Australia National University
 KAIST
 Keio University
 Korean University
 Macquarie University
 Manipal University
 Monash University
 National University Singapore
 Queensland University of Technology
 Seoul National University
 Sophia University
 Tokyo University of Science
 University of Auckland
 University of Melbourne
 University of New South Wales
 University of Newcastle
 University of Sydney
 Waseda University
 Yonsei University

PHILIPPINES

Ateneo de Manila University
 De La Salle University Manila
 DLSU College of Saint Benilde
 University of Asia and the Pacific
 University of Santo Tomas
 University of the Philippines